



WYFF Funding Q&A Session

Dimitri Groce, MSW
Youth & Young Adult Strategy

Edgar Longoria, MPA
Family Strategy

March 29th, 2022



Agenda for today

Welcome

About Building Changes

About WYFF

Family Strategy

Youth & Young Adult Strategy

Q&A Discussion

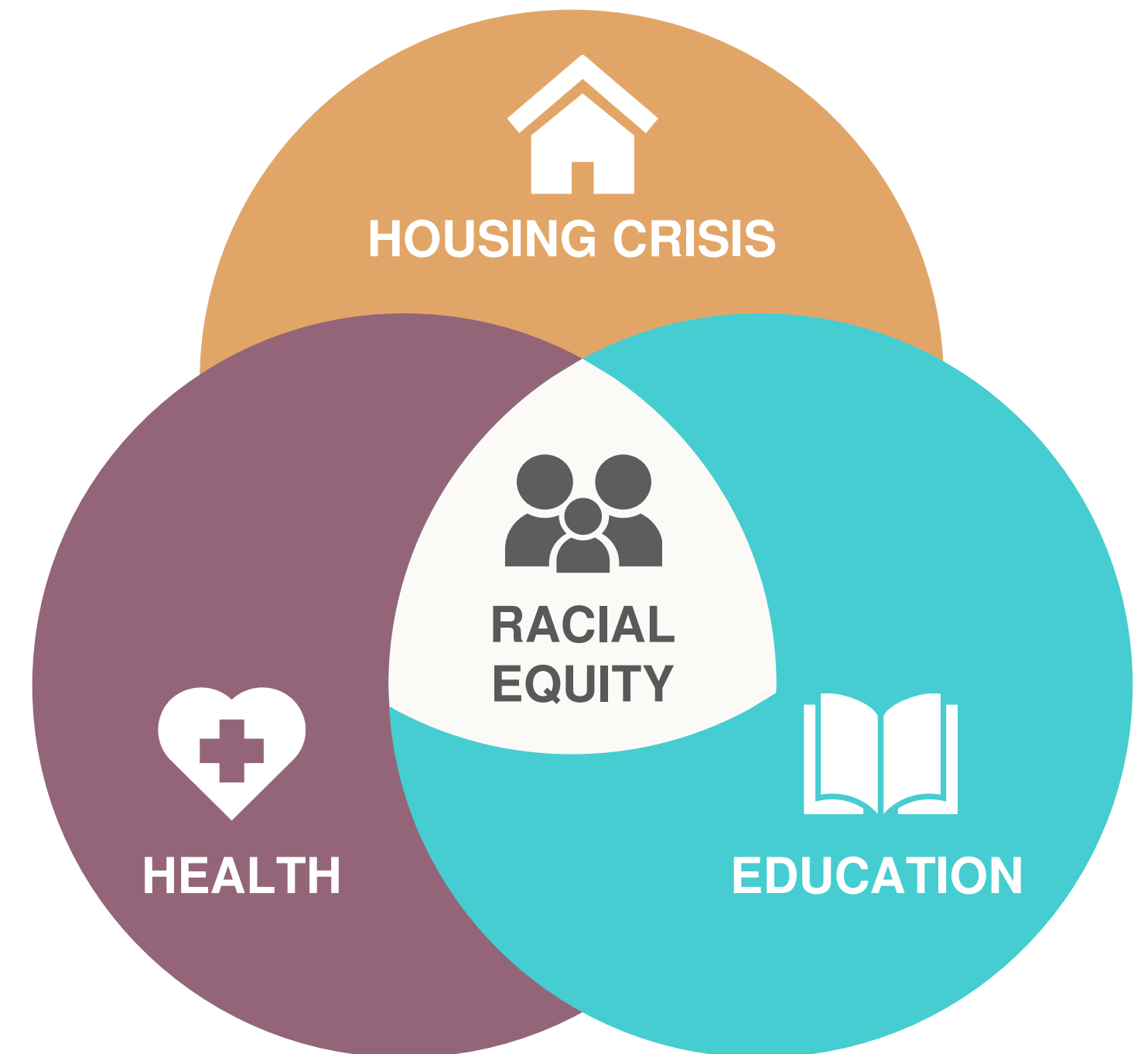
About Building Changes

Vision

Communities thrive when people have safe and stable housing and can equitably access and use services.

Mission

Building Changes advances equitable responses to homelessness in Washington State with a focus on children, youth, and families and the systems that serve them.



BC Racial Equity Statement

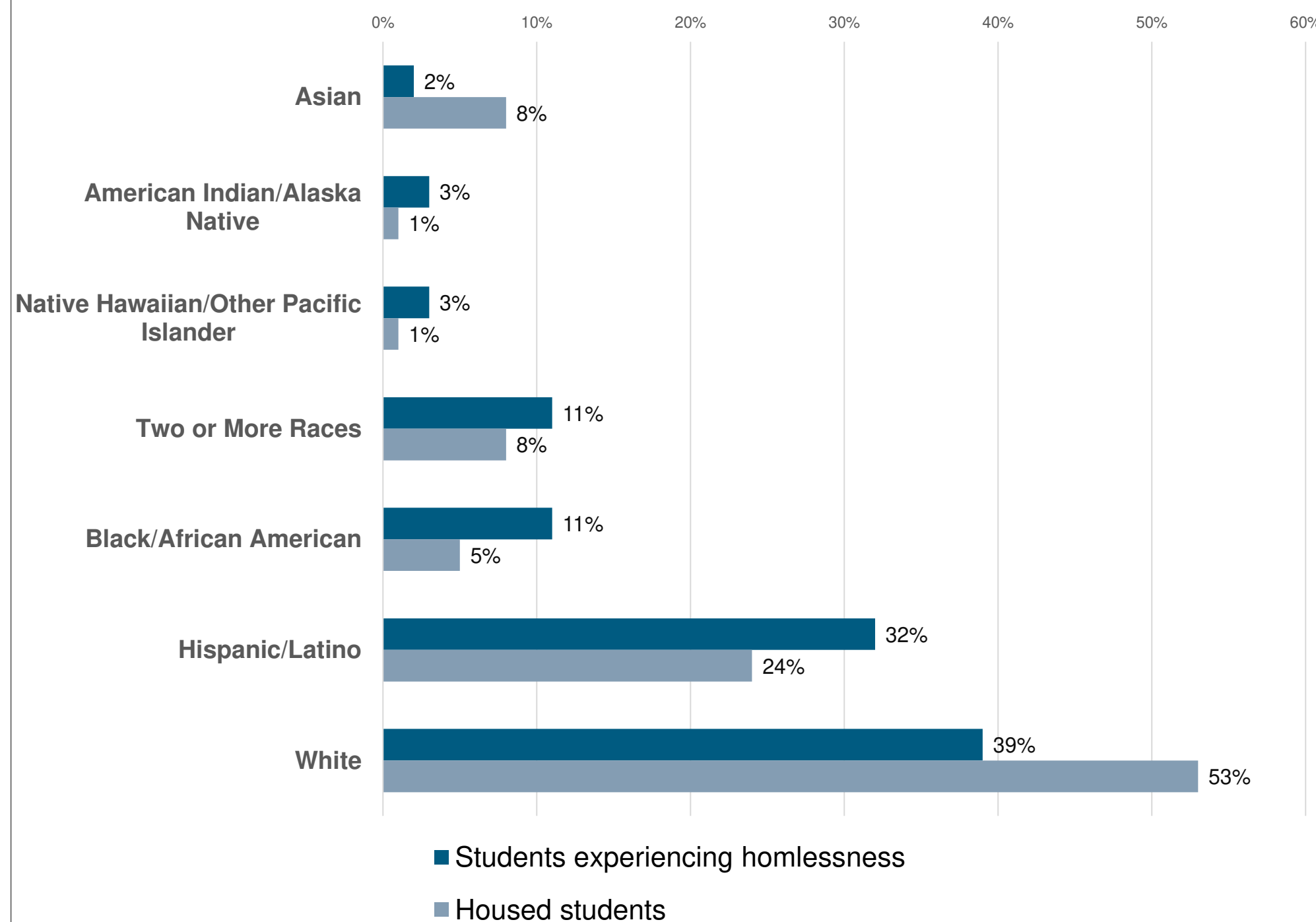
At BC, we seek to hold ourselves accountable for addressing racism and discrimination. Black, Indigenous, and other people of color disproportionately experience homelessness due to historical and systemic racism. We cannot address homelessness without addressing racism at its roots and the trauma it continues to perpetuate. We set universal goals to end homelessness and pursue targeted solutions to achieve these goals. Our work in race equity does not stop there. We are committed to building an internal culture that challenges racism within our organization.

Focus on those most impacted

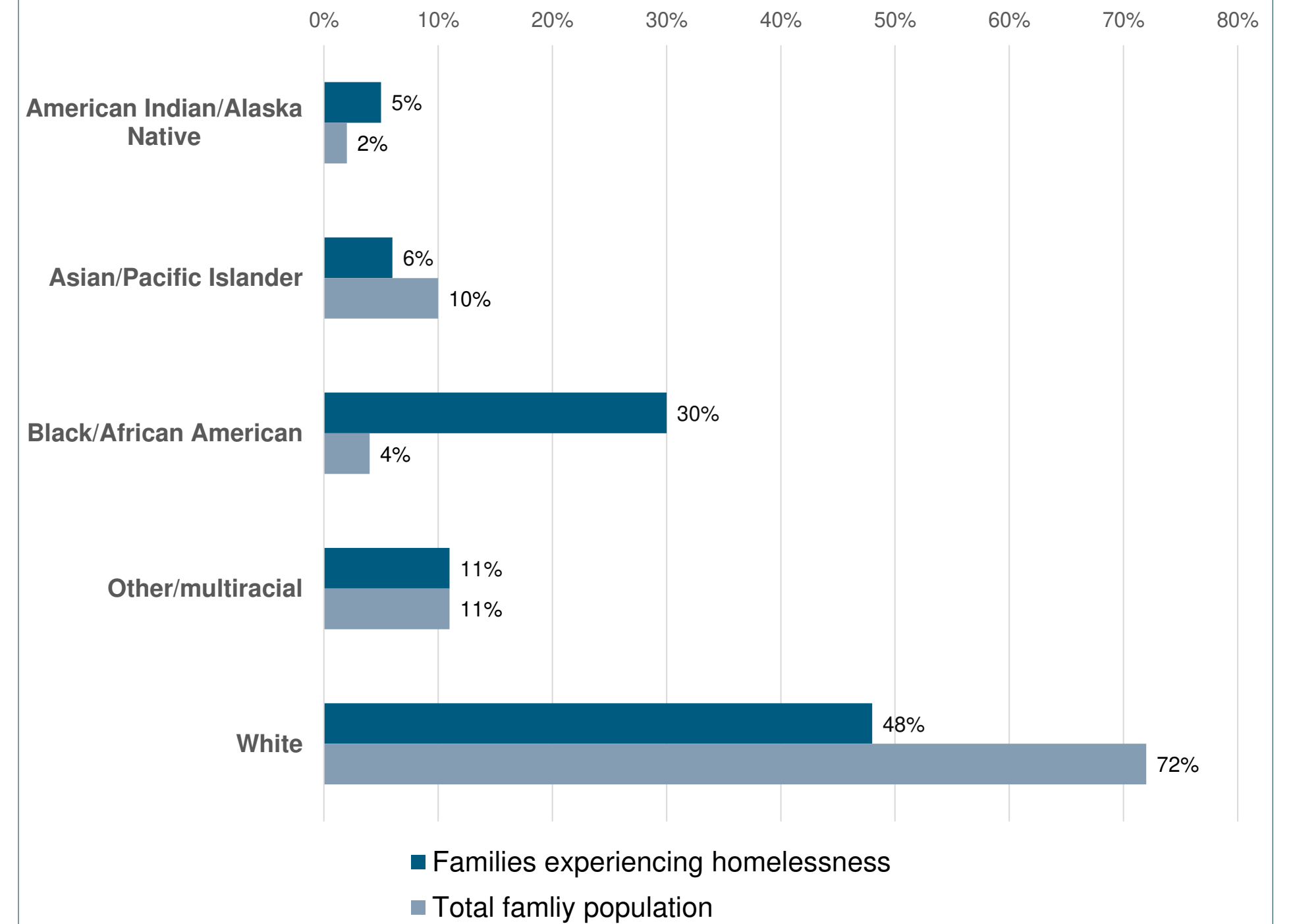
Targeted universalism approach



K-12 Students



Families



Through Washington Youth & Family Fund (WYFF), Building Changes awards grants and partners with organizations and tribes across the state to advance innovative strategies that help youth and families move out of homelessness.

WASHINGTON
YOUTH & FAMILIES FUND

Funding Opportunity

\$1.52 M *PER STRATEGY*

- 2- 4 Family grants
- 2- 4 YYA grants
- Different allocations per year

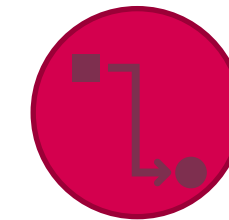
3- YEAR FUNDING CYCLE (2022- 2025)

- Annual lump sum disbursement
- Indirect & direct costs are eligible
- Fiscal & programmatic reporting

ELIGIBLE APPLICANTS

- Nonprofit community/neighborhood-based or regional/statewide housing assistance agencies, federally recognized tribes, local housing authorities, and public development authorities
- Culturally-specific orgs or smaller orgs led & staffed by persons of color are **encouraged to apply**
- Strive for statewide **geographic diversity**

WYFF Strategy Development Guiding Principles



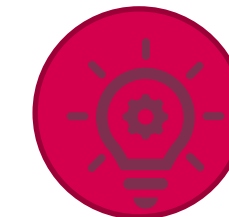
Structural Change



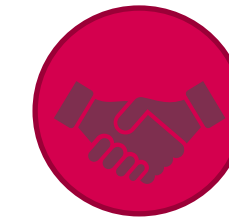
Targeted Universalism



Flexibility



Innovation & Learning



Transformational Partnership



**BUILDING
CHANGES**

Family Strategy

Housing & Healing

*Racial Equity-focused
Addressing the disproportionality
Using Targeted Universalism
Culturally-specific/Orgs serving BIPOC*

*Organizations and Tribes with a strong interest in
resolving and ending homelessness for families*



Flexible Funds

*Housing First
Rapid-Rehousing, Diversion, hotel/motel assistance*

*Meeting housing stability needs as well as family
barriers, priorities, and preferences*

*Flexible funds to overcome obstacles to attaining,
and maintaining safe and stable housing*



**BUILDING
CHANGES**

Healing Practices

- *Organizations ready to embrace Healing as a body of work to help participants move towards trauma recovery and healing*
- *Leaning into Cultural Identity, Belonging, and Community as pathways for healing*
- *Using traditional knowledge, cultural knowledge, custom, ceremony, art therapies, movement, embodiment, and healing circles*

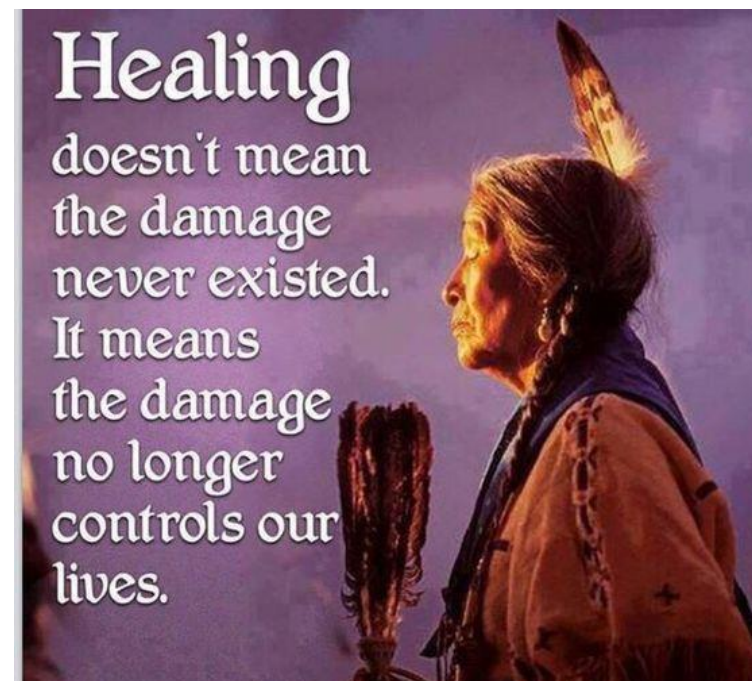



Spirit of Eagles Medicine Wheel, by Chholing Taha, 2010
U.S. National Library of Medicine

What is Healing?

Healing is a commonly used term, and yet rigorous research on the definition and meaning of *healing* has been published infrequently, and understanding of the concept remains confusing... (NIH/NLM)

- Racial Equity
- Decolonization
- Mindfulness
- Embodiment
- Spiritual
- Values Alignment
- Self-discovery/ Transformation
- Awareness & Consciousness building
- Transcending trauma, reactivity, suffering within the mind/body/heart/soul
- Wholeness
- Living Meaningfully
- in alignment with your values and purpose



 healing

/ˈheɪlɪŋ/

noun

noun: **healing**

the process of making or becoming sound or healthy again.
"the gift of healing"



Sacred Community Healing Circle

<https://www.ncbi.nlm.nih.gov/pmc/articles/PMC4653605/>



Youth & Young Adult Strategy

Putting resources toward supporting young people have greater awareness and ability to choose housing options that are right for them.

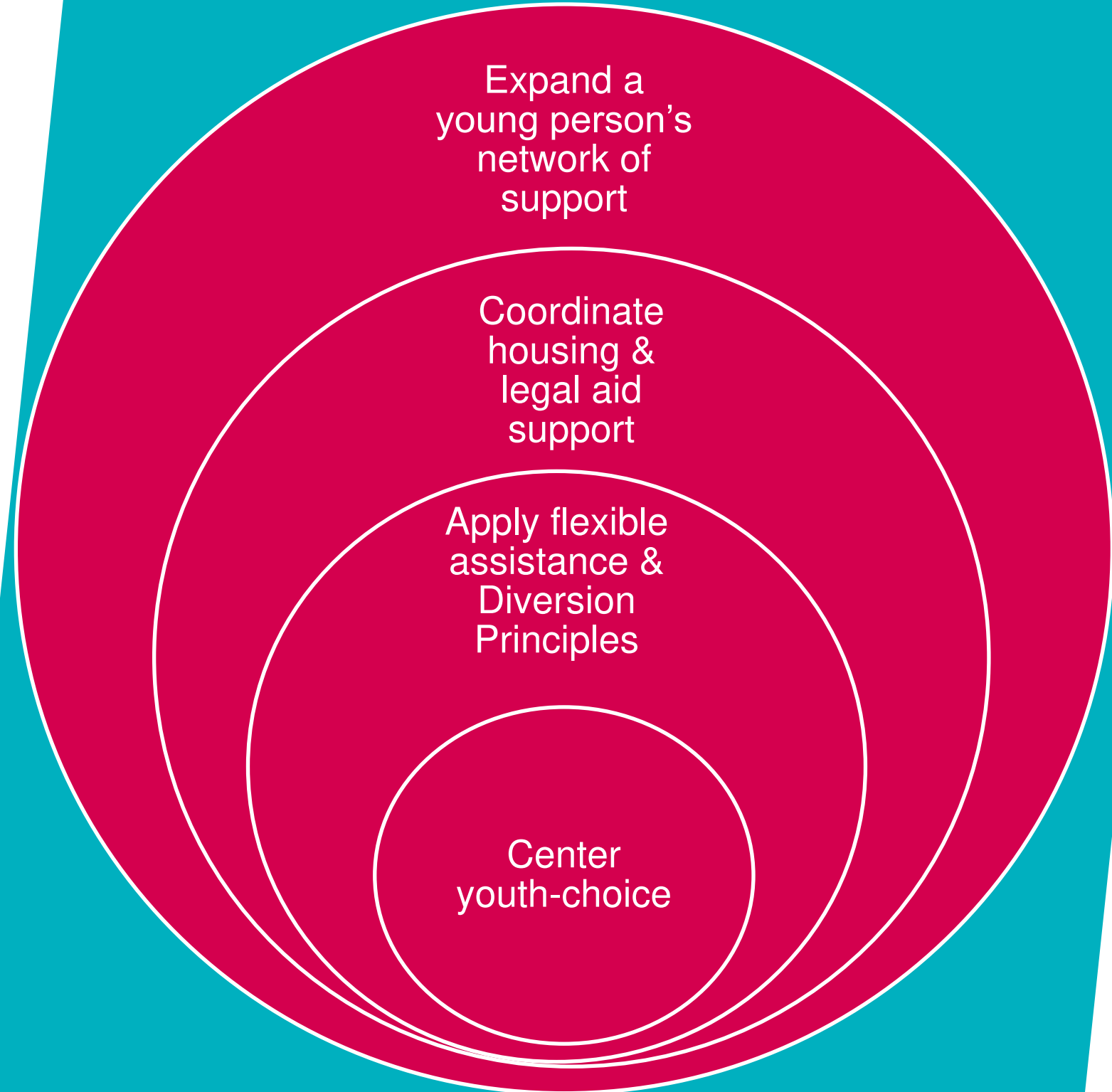
Safe housing options that affirm young peoples' identities and experience.

Specifically designed to address the needs of unaccompanied BIPOC, LGBTQ2+ young people, specifically 16- 21.

Strategic Objectives & Outcomes

Primary outcomes:

- Safe & stable housing, including “safe in-between” housing options
- Resolution of legal issues that impact dependency & housing status
- Increased self-efficacy skills for young people
- Expanded network of support to promote meaningful skill development, physical & mental health, and connectedness



Application Timeline

All WYFF Applications due Monday, May 2nd

Application Reviews: May 2nd – May 24th

Finalists Announced: Wednesday, May 25th

Finalists Interviewed: ~Friday, June 3rd

Funding Announcement: Friday, June 10th



Review & Selection Process

Applications will be reviewed by a selection committee

Application Reviews

- Committee 10-12 stakeholders
- Multiple reviews
- Scoring rubric
- Weighted sections

Finalists

- 3rd review and scoring
- Reviewed by entire committee
- Questions formulated
- Selections made for interviews

Interviews

- Meet the Team
- End of May (June 3rd)
- Leadership & Key Staff
- Answer questions formulated by reviewers about RFP submission

Grantee Announcements

- Announcements by June 10th
- 2-4 Organizations
- \$1.52 million
- Begin a 3-year fiscal and capacity building supportive partnership



Q & A

Answer Questions Pre-Submitted
Answer Questions Today

Recording will be available, as well as FAQ page, week of 4/04



FAQs will be posted next week

*FAQ will cover everything asked and requests
submitted after this session through 4/04*

Application Deadline

Monday, May 2nd

WYFF Grantees will be announced

Friday, June 10th

Thank You.

To learn more about how you can get involved, visit:
<https://www.buildingchanges.org>

Dimitri Groce

Dimitri.groce@buildingchanges.org

206.805.6135

Edgar Longoria

Edgar.longoria@buildingchanges.org

206.805.9000

