

# Centralized Diversion Fund: An Important, Necessary Tool for Addressing Homelessness in King County

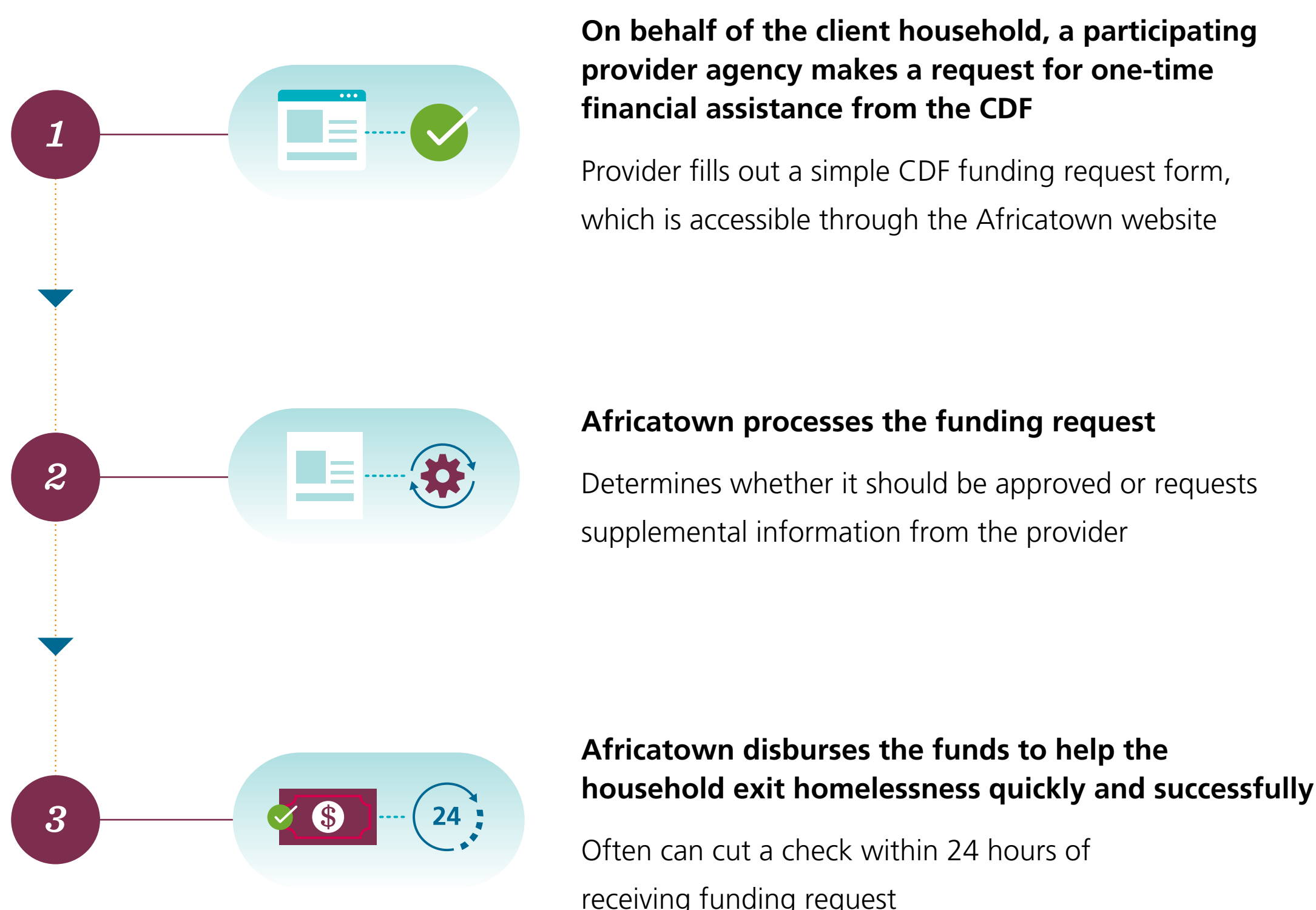


The Centralized Diversion Fund (CDF) is a common-sense, cost-effective solution to homelessness that is transforming lives and strengthening communities in King County.

The **CDF** helps people get housed by providing fast and simple access to funds needed to secure a safe and stable place to live.

## HOW THE CDF OPERATES

The CDF, operated by Africatown International, uses a standardized, client-centered process to expand housing options for people experiencing homelessness.



## BENEFITS OF THE CENTRALIZED DIVERSION FUND



## WHY IT WORKS: FLEXIBLE FUNDS SUPPORT WHAT PEOPLE NEED

CDF funds are flexible—free of monetary caps and arbitrary spending restrictions.

Average amount disbursed per household:

**\$2,135**

Top 3 Uses for Flex Funds



Flexibility capitalizes on people's strengths to resolve their housing crisis.

“

I had a client, a mother with four kids, and the whole family was living in a car, sleeping in a car, because they had to immediately move out of the unsafe living situation they were in. She had to go to a friend's house just so she could give her kids a bath. She had a job but couldn't afford the upfront costs to move into a new place. The lady calls me crying one day, and I'm able to tell her about this fund that can help her with those move-in costs. When the mom came to meet me, all four of her kids were with her, too, because they had nowhere else to go. About 24 hours after our meeting, I submitted a funds request to the CDF, and about eight hours later, the lady got her check. She was so happy. She hugged me and said, 'Oh my God, you saved my life!'

*Vanessa Kukelemeya, Housing Navigator, Therapeutic Health Systems*

”

The infrastructure for the CDF is already in place, and it is already helping people get stably housed right now—but **unless new public and/or private funding is secured, our momentum will be lost.**

Read more about the CDF and learn how you can support the CDF's progress into a fully embedded response within King County's homeless system: [bit.ly/cdf-resources](https://bit.ly/cdf-resources)